



Company : Apache Energy Ltd

Well : Wasabi-1

Interval : 58.00 - 943.23 meters

Created : 23/Feb/2008 7:49:56 AM

INTEQ

### FORMATION EVALUATION LOG

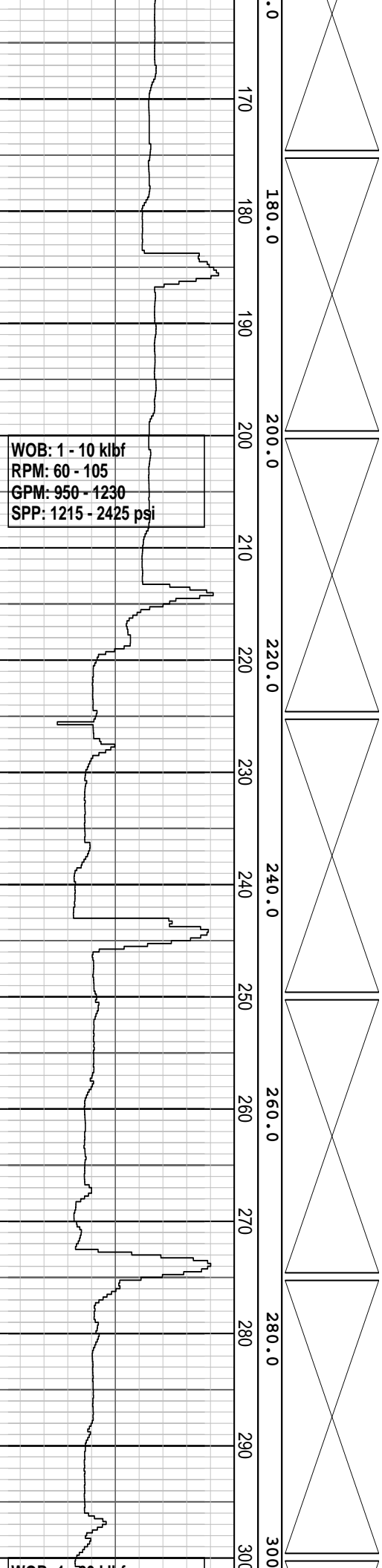
Drilling Rate ROP (m/hr)		MD meters TVDRT meters	Cuttings Lithology	Oil Show P F G	Visual Inferred Porosity P F G	Gas Data	Chromatograph Data	Calcmetry CaCO3 % MgCO3 %	Interpreted Lithology	Lithology Description
200	20									
200	20	0.0								RT - AHD: 39.015 m Water Depth: 26.985 m RT-Sea bed: 66.0 m
180	40	60								Spud well @ 2300 hrs on 14/02/2008
160	60	70								MW: 1.06 sg FV: 300 PV: 15 YP: 103 Gel: 80/110/113 pH: 9.2
140	80	80.0								Drill with Sea Water and Hi-Vis pills, Returns to Sea bed from 66.0 m to 862.0 m.
120	100	90								Survey @ 115.0 mMDRT Inc: 0.14 Azi: 336.08 TVD: 115.45 m
100	120	100.0								
80	140	110								
60	160	120.0								
40	180	130								
20	200	140.0								660 mm (26") Section TD @ 135.0 m on 15/02/08
	220	150								Survey @ 142.86 mMDRT Inc: 0.18 Azi: 296.21 TVD: 142.86 m
	240	160								
	260									
	280									
	300									
	320									
	340									
	360									
	380									
	400									

14/02/2008

NB1: 660 mm (26")  
Smith  
Type: XR+C  
Jets: 4 X 18  
Depth In: 66.0 m  
Depth out: 135.0 m  
Drilled 69.0 m in 2.5 hrs  
Grade:  
1-1-WT-A-E-I-NO-TD

NB2: 406 mm (16")  
Rock Bit  
Type: T11CDH  
Jets: 3 X 18, 1 X 16  
Depth In: 135.0 m  
Depth out: 862.0 m  
Drilled 727.0 m in 13.9 hrs  
Grade:  
1-2-WT-A-E-I-NO-TD

15/02/2008

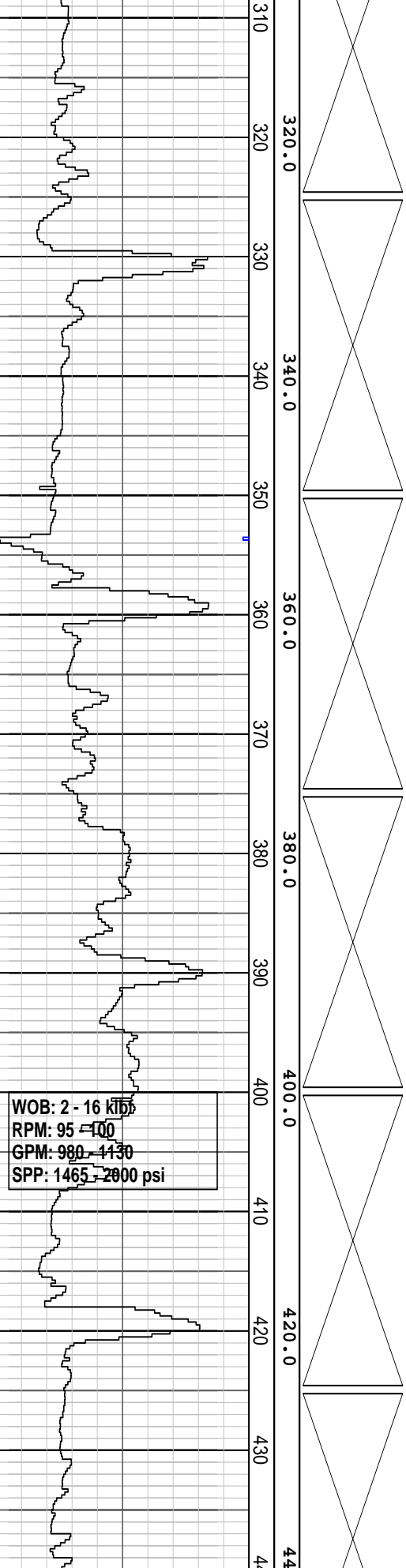


Survey @ 170.39 mMDRT  
 Inc: 0.09 Azi: 303.79  
 TVD: 170.39 m

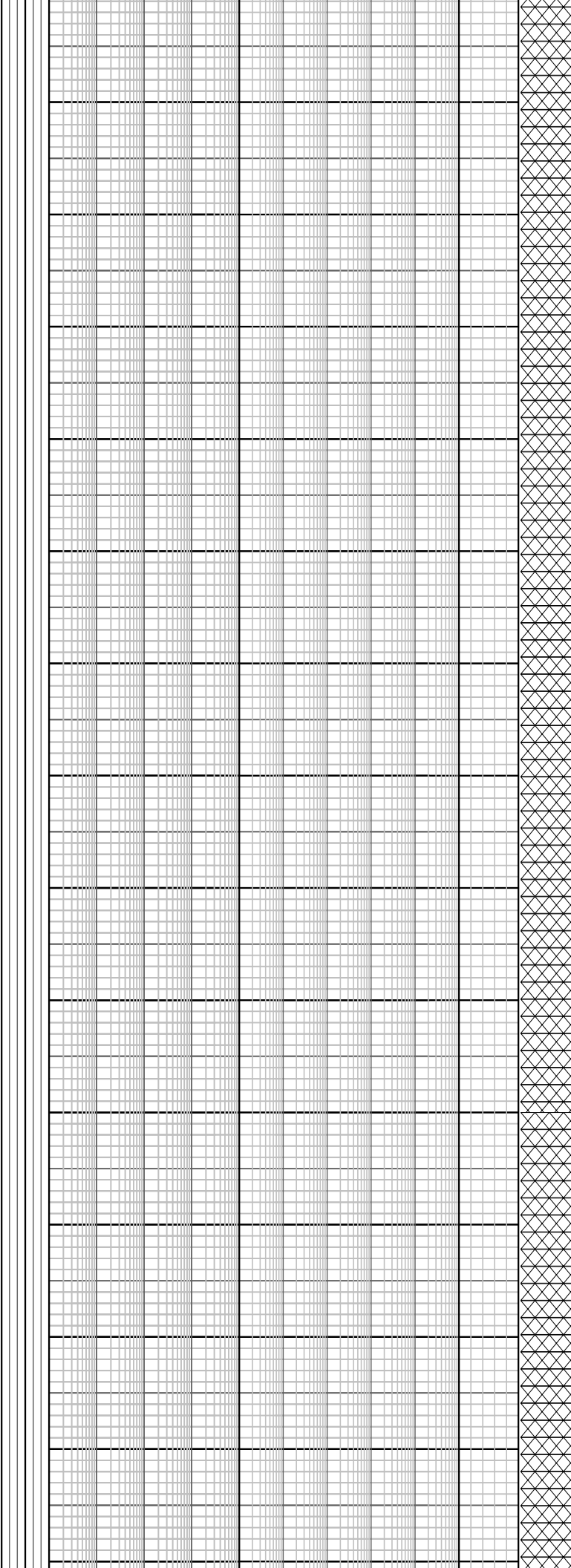
Survey @ 201.95 mMDRT  
 Inc: 0.09 Azi: 130.71  
 TVD: 201.95 m

Survey @ 229.75 mMDRT  
 Inc: 0.10 Azi: 88.12  
 TVD: 229.75 m

WOB: 1 - 26 kip  
RPM: 60 - 105  
GPM: 970 - 1160  
SPP: 1405 - 2050 psi



WOB: 2 - 16 kip  
RPM: 95 - 100  
GPM: 980 - 1130  
SPP: 1465 - 2000 psi



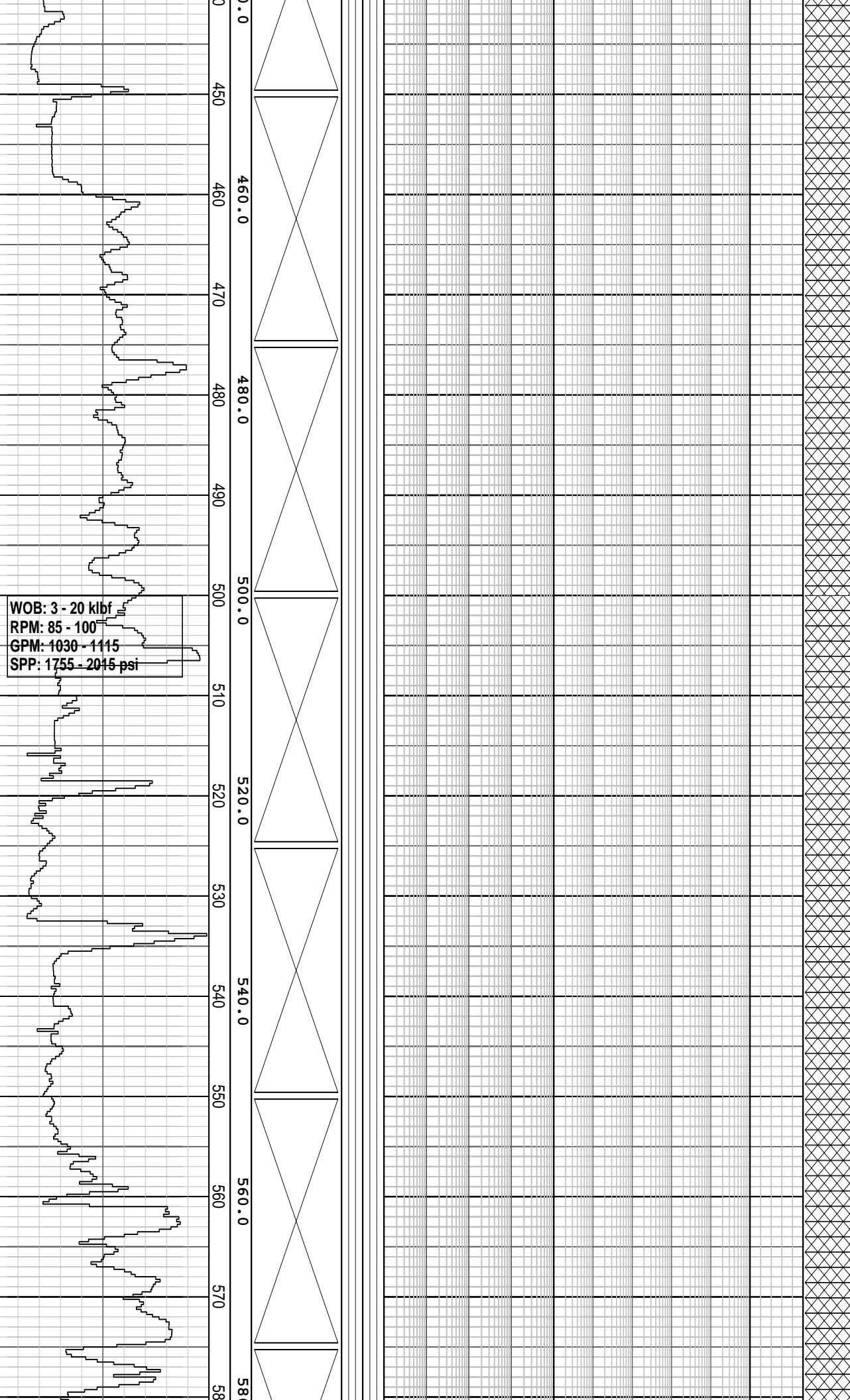
Drill with Sea Water and Hi-Vis pills, Returns to Sea bed from 66.0 m to 862.0 m.

Drill with Sea Water and  
Hi-Vis pills, Returns to Sea  
bed from 66.0 m to 862.0 m.

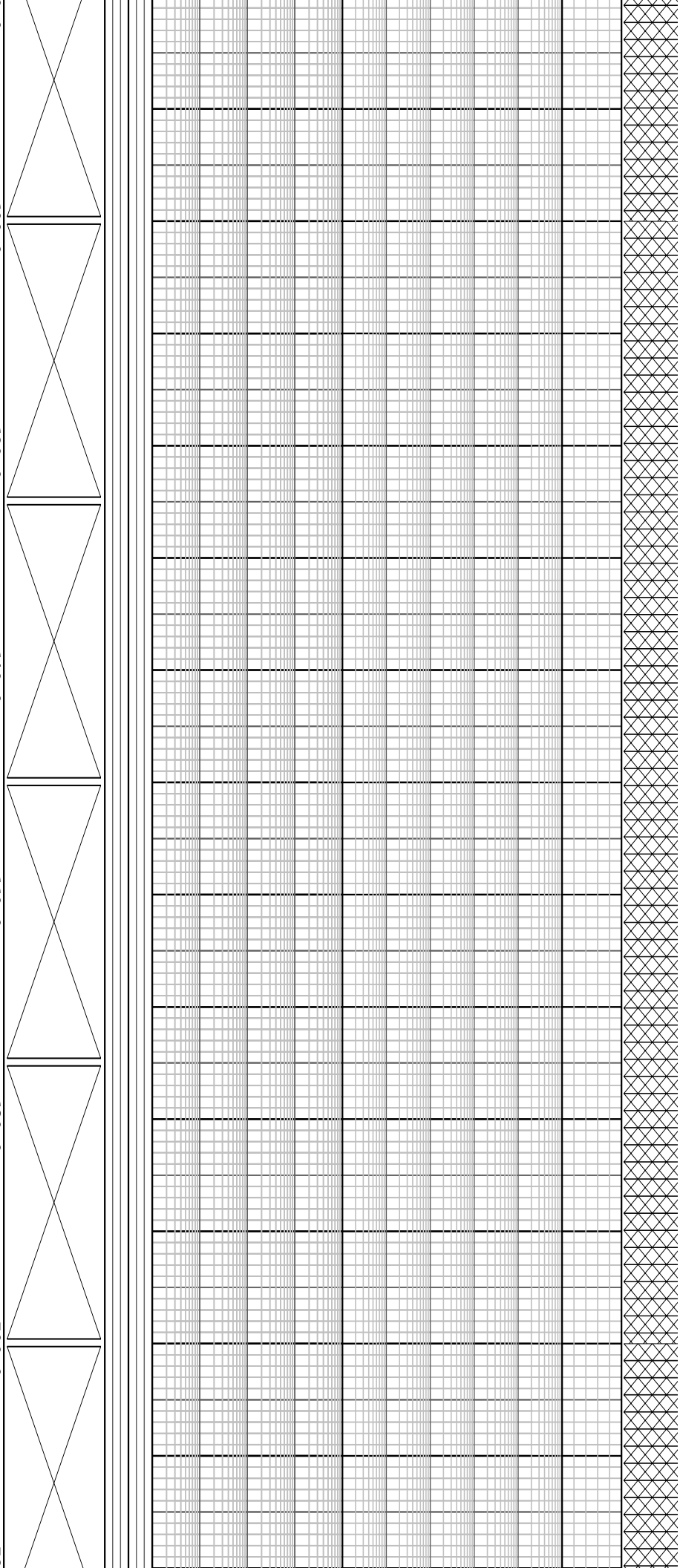
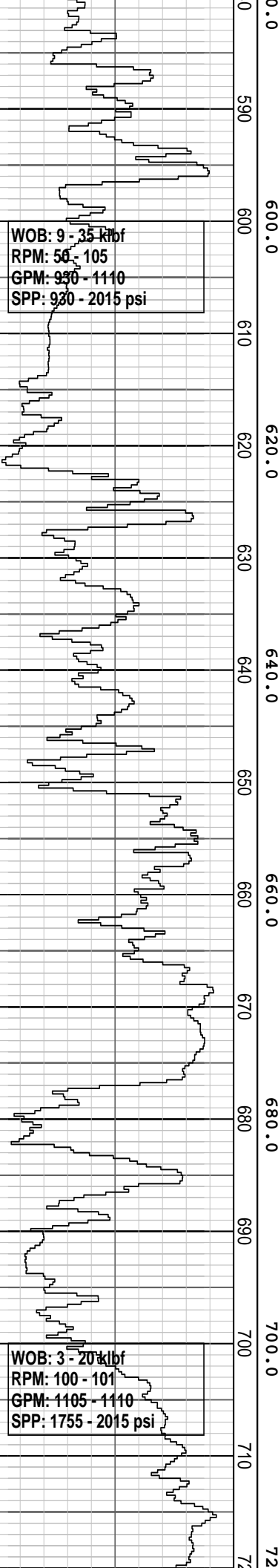
Survey @ 494.63 mMDRT  
Inc: 0.28 Azi: 191.25  
TVD: 494.63 m

MW: 1.06 sg FV: 120  
PV: 6 YP: 88  
Gel: 65/80/90 pH: 9.2

Survey @ 553.43 mMDRT  
Inc: 0.48 Azi: 178.29  
TVD: 553.43 m

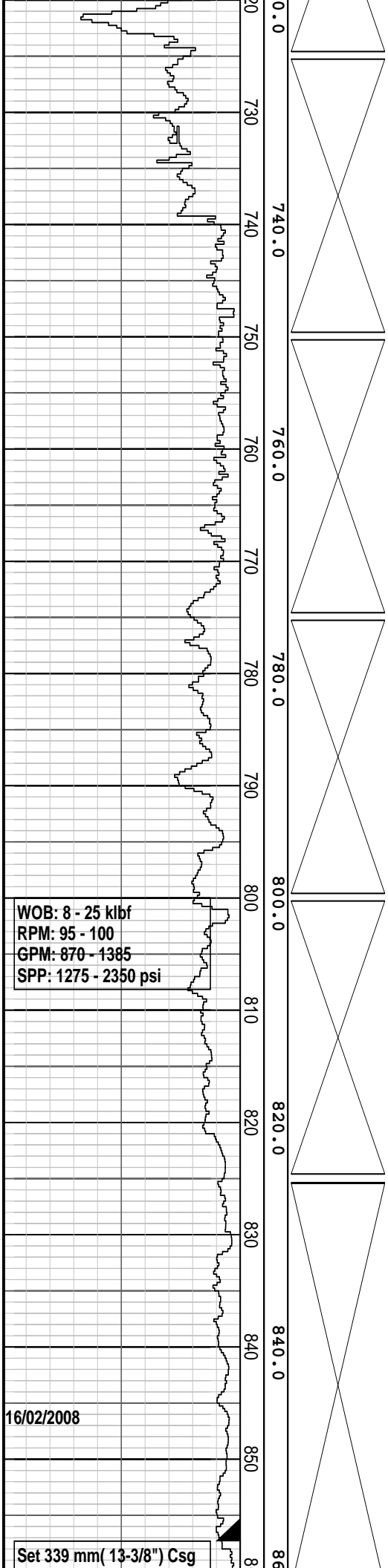


WOB: 3 - 20 klf  
RPM: 85 - 100  
GPM: 1030 - 1115  
SPP: 1755 - 2015 psi



Drill with Sea Water and  
 Hi-Vis pills, Returns to Sea  
 bed from 66.0 m to 862.0 m.

Survey @ 700.75 mMDRT  
 Inc: 0.84 Azi: 171.77  
 TVD: 700.75 m



WOB: 8 - 25 kbf  
RPM: 95 - 100  
GPM: 870 - 1385  
SPP: 1275 - 2350 psi

16/02/2008

Set 339 mm (13-3/8") Csg

Survey @ 759.92 mMDRT  
Inc: 0.78 Azi: 172.15  
TVD: 759.90 m

Survey @ 789.17 mMDRT  
Inc: 0.56 Azi: 166.34  
TVD: 789.15 m

Survey @ 818.74 mMDRT  
Inc: 0.38 Azi: 176.04  
TVD: 818.72 m

